

The Progress Electronic Magazine

In this issue:

Publisher's Statement:	2
Coding Article: Bar Graphs With Webspeed	3
Testing Code.....	4
BarChart.html / BarChart.i	4
Reference Partners Wanted	7
What is it?.....	7
Who!	8
How!	9
Publishing Information:	11
Other Progress Publications Available:	11
Products Available From Amduus:	12
Article Submission Information:	12
Order Form for Progress Open Source CD-ROM	13

This document may be freely shared with others without modification. Subscribe for free here: <http://www.amduus.com/online/dev/ezine/EZineHome.html>

Though intended for users of the software tools provided by Progress Software Corporation, this document is NOT a product of Progress Software Corporation.

© Amduus Information Works, Inc. 2003

Publisher's Statement:

Alas, I have finished up a contract with the Superior Court of California and am available once again to do work. If any of you have some work that can be done in the United States or via the wire, take a gander at my resume:

<http://www.amduus.com/Resumes/ScottAuge.html>.

I tend towards web based applications on UNIX/Linux operating systems. My skills include law enforcement, manufacturing, and service oriented companies and their problems. I also offer Webspeed training.

In this issue, we explore creating graphs with Webspeed or one of the alternatives that enable E4GL coding to be used. It is simple, but a common question on the internet. Finally we have a documented version with some code!

Amduus Information Works, Inc. also provides documentation services! Scott Auge notes, "One of the things I have noticed throughout my contracting career is that companies with developed software always seem to be missing or weak on user documentation, administration documentation, and programmer documentation." Amduus can help you with this!

!!!WANTED!!!

Amduus Information Works, Inc. is looking for consultants to resell access to up-coming ASP web based software. We will need you to find companies who would want use of this software, to configure the software to their needs, and to support them in the use of the software. The software is rented out – no licenses are sold. Each month, you would receive a portion of the revenue, as well be able to bill for training and support – modeled like an insurance agency. Contact sauge@amduus.com for more information.

Coding Article: Bar Graphs With Webspeed

By Scott Auge

There are many questions appearing on the Progress E-Mail Group (<http://www.peg.com>) about how to create various types of graphs on web pages. A previous E-Zine carries an article on how to create pie graphs – so this article will concentrate on bar graphs.

Below is a quick test of the code made available further down in the article. As you can see, the code is encoded in functions that can be easily called from ESS or HTML mapped based code. It includes a function to create vertically oriented bars, and a function to create horizontally oriented bars.

Reach over one thousand
programmers and companies.

Your ad could be here!

Advertise in the E-Zine for
\$10.00 per issue!

WebSpeed Scripting Lab - Mozilla

File Edit View Go Bookmarks Tools Window Help

http://amduus2/online/srvexp/webtools/edtsrptw

Fonts Colors Images JavaScript Clear Cache Real UA PrefBar Help What's New Customize

WebSpeed WebTools View File WebSpeed Scripting Lab

Scripting Lab

Language: **SpeedScript** [SQL](#) [JavaScript](#) [VBScript](#) [HTML](#)

```
{/home/sauge/code/progress/barchart/barchart.1}  
  
{&OUT} "<center>" HBarChart ("5|10|20|30", "A|B|C|D", 10, 10, "80%")  
"</center>".  
  
{&OUT} "<center>" VBarChart ("5|10|20|30", "A|B|C|D", 5, 10, "20%")  
"</center>".
```

Run Script Sample: Simple DO Loop Clear Reset

Results:

A B C D

A B C D

Transferring data from amduus2...

Testing Code

Below is the testing code that generate the bar graphs in the above screen print. To use the bar graph functions, the programmer merely needs to include the barchart.i file in their application code. Then call out to HBarChart for horizontally positioned bars, and VBarChart for vertically positioned bars.

```
{/home/sauge/code/progress/barchart/barchart.i}

{&OUT} "<center>" HBarChart ("5|10|20|30", "A|B|C|D", 10, 10, "80%")
"</center>".

{&OUT} "<center>" VBarChart ("5|10|20|30", "A|B|C|D", 5, 10, "20%")
"</center>".
```

The first argument are the actual values to determine the bar size. These values included with the “magnification” value will create a bar of value x magnification pixels wide. The values are separated by the | character, which allows the user to send in a list of values. Sending decimals are not recommended.

The next argument is the labels to be associated with each bar. They are respective to the list of values in the first argument.

The next value is the magnification value. This lets you “magnify” the bar chart if the original values won’t create images large enough to be seen. For example, from the data set, one might get a value of 1. This would translate to 1 pixel on the screen. This argument is used to increase the size with the same ratio associated with the other bars. Using a magnifier of 10, it would change the 1 value into a 10, making that bar in the chart 10 pixels in length.

The following argument specifies the width of the bar. You can increase or decrease the bar thickness with this value in pixels.

The final argument is the size of the table the bar chart should appear in.

You can include the function in other HTML tags such as the <center> shown above.

BarChart.html / BarChart.i

Here is the E4GL code that when compiled will create the appropriate .i file.

```
<!--WSMETA NAME="wsoptions" CONTENT="include" -->
<!--WSS
/*
 * Removal of this header is illegal.
 * Written by Scott Auge scott_auge@yahoo.com sauge@amduus.com
```

```

* Copyright (c) 2002 Amduus Information Works, Inc. www.amduus.com
*
* Redistribution and use in source and binary forms, with or without
* modification, are permitted provided that the following conditions
* are met:
* 1. Redistributions of source code must retain the above copyright
* notice, this list of conditions and the following disclaimer.
* 2. Redistributions in binary form must reproduce the above copyright
* notice, this list of conditions and the following disclaimer in the
* documentation and/or other materials provided with the distribution.
* 3. All advertising materials mentioning features or use of this software
* must display the following acknowledgement:
* This product includes software developed by Amduus Information Works
* Inc. and its contributors.
* 4. Neither the name of Amduus Information Works, Inc. nor the names of
* its contributors may be used to endorse or promote products derived
* from this software without specific prior written permission.
*
* THIS SOFTWARE IS PROVIDED BY AMDUUS AND CONTRIBUTORS ``AS IS'' AND
* ANY EXPRESS OR IMPLIED WARRANTIES, INCLUDING, BUT NOT LIMITED TO, THE
* IMPLIED WARRANTIES OF MERCHANTABILITY AND FITNESS FOR A PARTICULAR PURPOSE
* ARE DISCLAIMED. IN NO EVENT SHALL THE AMDUUS OR CONTRIBUTORS BE LIABLE
* FOR ANY DIRECT, INDIRECT, INCIDENTAL, SPECIAL, EXEMPLARY, OR CONSEQUENTIAL
* DAMAGES (INCLUDING, BUT NOT LIMITED TO, PROCUREMENT OF SUBSTITUTE GOODS
* OR SERVICES; LOSS OF USE, DATA, OR PROFITS; OR BUSINESS INTERRUPTION)
* HOWEVER CAUSED AND ON ANY THEORY OF LIABILITY, WHETHER IN CONTRACT, STRICT
* LIABILITY, OR TORT (INCLUDING NEGLIGENCE OR OTHERWISE) ARISING IN ANY WAY
* OUT OF THE USE OF THIS SOFTWARE, EVEN IF ADVISED OF THE POSSIBILITY OF
* SUCH DAMAGE.
*
*/

&IF DEFINED(BarChartRCSVersion) <> 1 &THEN
&GLOBAL-DEFINE BarChartRCSVersion YEP
DEF VAR BarChartRCSVersion AS CHARACTER INIT "$Header:
/home/sauge/code/progress/barchart/barchart.html,v 1.1 2003/05/18 00:24:52
sauge Exp sauge $" NO-UNDO.
&ENDIF

FUNCTION HBarChart RETURNS CHARACTER
(INPUT cListHorizonValue AS CHARACTER,
 INPUT cListLabel AS CHARACTER,
 INPUT cMagnification AS INTEGER,
 INPUT cVerticalValue AS INTEGER,
 INPUT cTableWidth AS CHARACTER
):

  DEF VAR i AS INTEGER NO-UNDO.
  DEF VAR l AS INTEGER NO-UNDO.

  ASSIGN l = NUM-ENTRIES(cListHorizonValue,"|").

  -->

  <table width="`cTableWidth`" border="0" cellspacing="0" cellpadding="0">

    <!--WSS DO i = 1 TO l: -->
    <tr>
      <td width="20%"><div align="right">`ENTRY(i,cListLabel,"|")`</div></td>
      <td width="80%"></td>

```

```

    </tr>
    <!--WSS END. -->
</table>

<!--WSS
RETURN "".
END.

FUNCTION VBarChart RETURNS CHARACTER
(INPUT cListHorizonValue AS CHARACTER,
INPUT cListLabel AS CHARACTER,
INPUT cMagnification AS INTEGER,
INPUT cVerticalValue AS INTEGER,
INPUT cTableWidth AS CHARACTER
):

    DEF VAR i AS INTEGER NO-UNDO.
    DEF VAR l AS INTEGER NO-UNDO.

    ASSIGN l = NUM-ENTRIES(cListHorizonValue,"|").

    -->

    <table width=`cTableWidth`" border="0" cellspacing="0" cellpadding="0">

        <tr>
            <!--WSS DO i = 1 TO l: -->
            <td valign="bottom"><div align="center"></div></td>
            <!--WSS END. -->
        </tr>

        <tr>
            <!--WSS DO i = 1 TO l: -->
            <td><div align="center">`ENTRY(i,cListLabel,"|")`</div></td>
            <!--WSS END. -->
        </tr>

    </table>

    <!--WSS
    RETURN "".
END.
-->

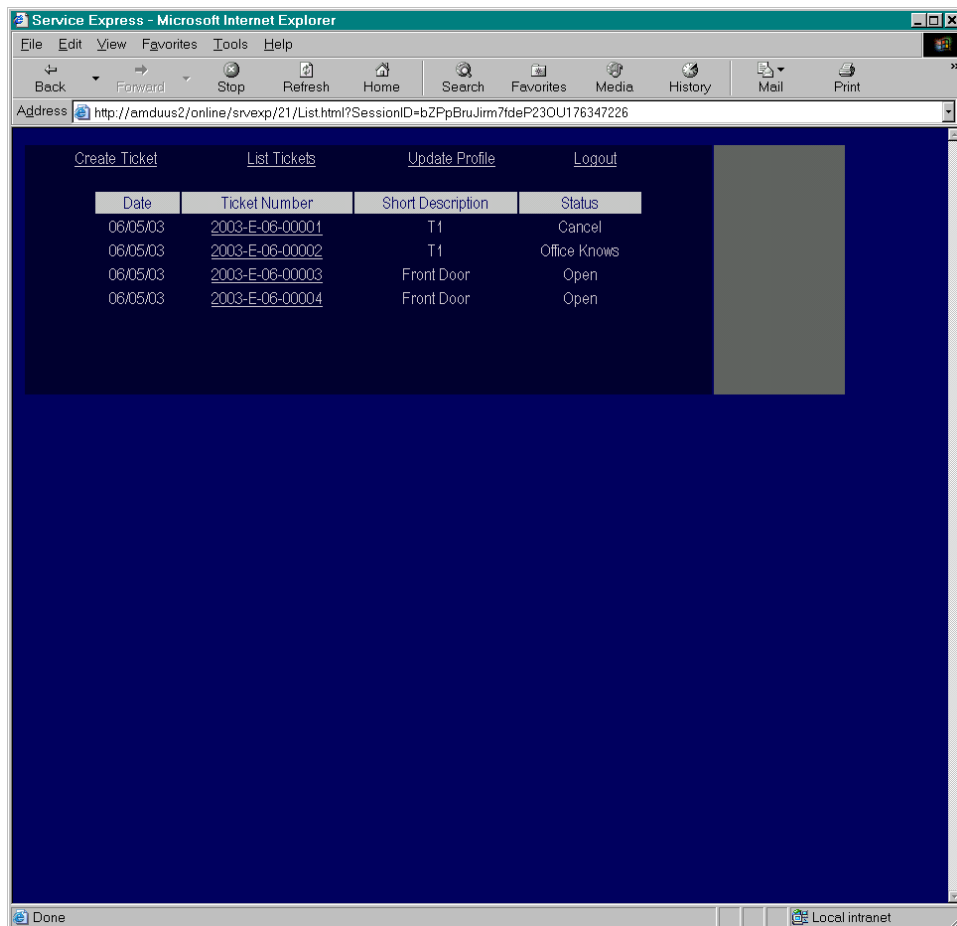
```

The code is dependent upon two graphics. They can be png, gif, or jpg. You can pull the images I used from <http://www.amduus.com/icons/other/barrevp.png> and <http://www.amduus.com/icons/other/barrehp.png>. There are other colors available also. Please make copies of the image and install them on your system so they are available to you all the time.

About the author: Scott Auge is the founder of Amduus Information Works, Inc. He has been programming in the Progress environment since 1994. His works have included E-Business initiatives and focuses on web applications on UNIX platforms. sauge@amduus.com

Reference Partners Wanted

Amduus Information Works, Inc. finally has a working version of the Service Express available!



A listing of tickets belonging to a customer

What is it?

What is it? It is a work order/issue tracking system. It lets your customers (whether they be your co-workers, or the company's customers) create work orders (tickets) to solve problems. The tickets can be categorized by types and problems; And a work flow can be developed to track the status of the ticket. All of this is configurable to match your industry or user base.

The screenshot shows a Microsoft Internet Explorer window titled "Service Express - Microsoft Internet Explorer". The address bar displays a URL: <http://amduus2/online/srvexp/21/Update.html?SessionID=bZPpBruJrm7tdeP23OU176347226&TicketSeq=hre2dg5Utn2780228>. The page has a dark blue background with white text and form fields. At the top, there are links: "Create Ticket", "List Tickets", "Update Profile", and "Logout". The main content area is divided into sections: "Contact Information", "Ticket Address", "Reference", "Status", "Ticket Type", "Priority", "Problem Type", "Brief Description", "Statement of Work", "Work Log", and "Update Work Log".

Contact Information	
Name	1027 F 1027 Last Name
Phone	555-555-1212
Email	sauge@amduus.com
Fax	No Fax
Pager	No Pager
Mobile	No Mobile

Ticket Address	
address2	
city2, state2, zipcode2	

Reference	
Reference	2003-E-06-00004
Status	
Status	Open

Ticket Type	
Ticket Type	House Repair
Priority	
Priority	1

Problem Type	
Problem Type	Broken Door

Brief Description	
Front Door	

Statement of Work	
There is wind coming in under the front door. Some weather stripping might be needed?	

Work Log	
06/05/03 16:07:52	
Status: Open by 1027 F 1027 Last Name	
06/05/03 23:02:37	
1027 F 1027 Last Name Adds:	
Will be out on the 12th at noon....	

Update Work Log	

Change Status	
Change Status	No Change

Submit

A customer's ticket information and work log

Who!

We would like to make it available to five companies/organizations that might be willing to offer suggestions for improvement and are willing to be referenced as user's of the software.

The company/organization can be governmental, non-profit, private, or a corporation.

Qualification Questions For Free Access To Service Express	
Market Served By Your Company?	
Is your organization non-profit?	Yes No
Is your organization a corporation?	Yes No
Would external customers use your site?	Yes No
Would internal customers use your site?	Yes No
Would the site be integrated into an existing site?	Yes No
Types of problems the site would aid in managing?	
Contact Person's Name	
Contact Person's Phone	
Contact Person's E-Mail Address	
Would your company be willing to act as a reference for the software?	
Would you be able to spend a day or so to learn how to and to perform configurations for the software?	
Would you be willing to pay a nominal fee to have Amduus configure the software?	
Estimated number of tickets created per day?	
Country of Company/Organization?	
<i>Currently Service Express is available only in English</i>	

How!

You can reach the public portion of a demo for the application here:

<https://www.amduus.com/cgi-bin/se0001pub/21/index.html>

You would be acting as a customer of a company called "Demo" with relations to the organization running the web site. Your company name would be Demo, and to prove that you are indeed an employee/representative of that company, you would know that the authorization code is Demo.

Let me point out that you could be an internal customer, such as HR approaching IT about setting up a new employee; Or, you could be an external customer approaching the organization with a request for a service to be performed.

This could be used by a manufacturing company for repairs/over-hauls of their equipment. An apartment complex for handling property issues. Any company/organization that wishes to interact with it's customers in a manner that needs to be defined and tracked for a process of completion.

Be sure to see the accompanying Power Point presentations for more information.

Please contact Scott Auge at sauge@amduus.com if you have additional questions!

Publishing Information:

Scott Auge publishes this document. I can be reached at sauge@amduus.com.

Amduus Information Works, Inc. assists in the publication of this document by providing an internet connection and web site for redistribution:

Amduus Information Works, Inc.
1818 Briarwood
Flint, MI 48507
<http://www.amduus.com>

Other Progress Publications Available:

This document focuses on the programming of Progress applications. If you wish to read more business oriented articles about Progress, be sure to see the Profile's magazine put out by Progress software <http://www.progress.com/profiles/>

There are other documents/links available at <http://www.peg.com> .

There is a web ring of sites associated with Progress programming and consultants available at <http://i.webring.com/hub?ring=prodev&id=38&hub> .

Products Available From Amduus:

Amduus Information Works, Inc. is a Progress reseller and ASPen partner. We primarily develop UNIX/Linux based applications with web interfaces for manufacturing, service, and law enforcement communities.

We also perform integration of Progress applications to non-Progress applications through such languages and tools as MQ Series, C, and C++.

Amduus provides support for the following applications: Blue Diamond, Denkh, Denkh HTML Reporter, Red Arrow Portal (CMS), Survey Express and other software.

Amduus is looking for consultants who might want to promote the use of our tools at user groups and companies they might work in. Send some information to sauge@amduus.com to let me know you are out there!

Article Submission Information:

Please submit your article in Microsoft Word format or as text. Please include a little bit about yourself for the About the Author paragraph.

Looking for technical articles, *marketing Progress* articles, articles about books relevant to programming/software industry, white papers, etc.

Order Form for Progress Open Source CD-ROM

COUPON 001A

This is an offer for the CD-ROM at lower than list savings!
This is a great way to support the E-Zine too!

Mail this form to:
Amduus Information Works, Inc.
1818 Briarwood
Flint, MI 48507

Please send _____ copies of the Open Source CD-ROM at
\$25.00 per disk to:



Name _____
Company _____
Address _____
City _____
State _____ Country _____
Zip _____

Please make your checks/money orders out to: [Amduus Information Works, Inc.](#) Cash works too!
This offer only valid in the United States of America.

The CD-ROM includes (all source code included):

- Blue Diamond/IRIS – Webspeed alternatives
- Survey Express – easily create text templates of surveys and then have the program generate the web pages automatically
- Service Express – Web based Help Desk.
- The Progress E-Zines, books on learning to program in Webspeed (PDF/Word/HTML)
- Denkh HTML Reporter – web based report writer
- CMS – a web content management system
- DB Email – Use pop3 to download emails into a Progress database
- Neural Networks – experiments in spam recognition and text message classification
- Denkh – create PDF file reports for Webspeed/UNIX CHUI!
- More!

