

CMS

Content Management System

Written by Scott Auge

sauge@amduus.com

scott_auge@yahoo.com

Copyright 2002 Amduus Information Works, Inc.

<http://www.amduus.com>

Contents

License.....	5
Purpose.....	6
Sample Web Site built with CMS tools:.....	7
Requirements.....	10
Maintenance and Support.....	11
Installation.....	12
Setting up the static web page to lead to the portal.....	13
Administration Tools.....	14
Articles.....	14
Files.....	14
Outside HyperLinks.....	14
Static HTML “Chunks”.....	14
Categories.....	15
Restrictions.....	15
Users X Restrictions.....	15
Operating the Administration Tools.....	15
Creating Users and Logging In.....	15
Administration Home Page.....	16
Administrating Categories.....	16
Categories can be renamed and deleted via the tool.....	17
Administrating Articles.....	17
Security.....	18
HTML Programs.....	19
index.html.....	19
SearchResult.html?SearchString=[].....	19
Contact.html?CategoryID=[]&ArticleID=[].....	19
ViewArticle.html?ArticleID=[].....	19
InputArticle.html?ArticleID=[].....	19
EditArticle.html?ArticleID=[]&Action=[New,Delete,Modify]&ArtText=[]&ArtTitle=[]&CategoryID=[].....	19
Login.html?UserID=[]&Password=[].....	20
Logout.html.....	20
EditUser.html?UserID=[]&UserPassword=[]&AdminPassword=[]&Action=[Delete,New,Modify]&UserEmail=[]&FirstName=[]&LastName=[].....	20
ListUser.html.....	20
EditLink.html?LinkID=[]&Action=[New,Delete,Modify]&Title=[]&Href=[]&CategoryID=[]&CategoryName=[].....	20
InputCategory.html?CategoryID=[].....	20

EditCategory.html?CategoryID=[]&CategoryName=[]&NewCategoryName=[]&Action=[New,Delete,Modify]	20
EditCollab.html?CollabID=[]&CollabName=[]&Action=[New,Delete,Modify]	21
EditCollabMsg.html?CollabID=[]&MsgID=[]&Action=[New,Delete,Modify]	21
ViewCollabMsg.html?MsgID=[]	21
ListCollabMsg.html?CollabID[]	21
Internal Procedures and Functions Available	22
DBStatic(Name)	22
LinkList (Category, NumberToShow)	22
ShowTitle()	22
ShowFooter()	22
ShowLinks(CategoryName)	22
ShortList(CategoryName, NumberListed)	23
MenuList(CategoryName, NumberListed)	23
ShowCategories()	23
ShowContact(ArticleID)	23
InputSearch(SearchString)	23
GetArticleID()	23
ShowArticleInfo()	23
ShowArticleText(ArticleID)	23
ShowArticleTitle(ArticleID)	23
Date2Text(DATE)	24
NewsAlert(CategoryName)	24
ShowCollabMsgHdr(MsgID)	24
ShowCollabMsgText(MsgID)	24
ShowCount(CounterName)	24
IncCount(CounterName)	24
text2html.p (input text, output html)	24
date2text.p (input date, output text)	24
SearchText.p (input SearchString, input TextToSearch, output Score)	24
CSSLink.i	24
Configuration File	26
Scripts	27
setenv.ksh	27
startweb.ksh	28
stopweb.ksh	28
restartweb.ksh	28
watchweb.ksh	28
logindb.ksh	28
startdb.ksh	29
stopdb.ksh	29
LoadCategory.ksh	29

UNIX OS Dependencies.....	30
Programming Notes.....	31

License

Written by Scott Auge scott_auge@yahoo.com sauge@amduus.com
Copyright (c) 2001 Amduus Information Works, Inc.

Redistribution and use in source and binary forms, with or without modification, are permitted provided that the following conditions are met:

1. Redistributions of source code must retain the above copyright notice, this list of conditions and the following disclaimer.
2. Redistributions in binary form must reproduce the above copyright notice, this list of conditions and the following disclaimer in the documentation and/or other materials provided with the distribution.
3. All advertising materials mentioning features or use of this software must display the following acknowledgement:
 This product includes software developed by Amduus Information Works Inc. and its contributors.
4. Neither the name of Amduus nor the names of its contributors may be used to endorse or promote products derived from this software without specific prior written permission.

THIS SOFTWARE IS PROVIDED BY AMDUUS AND CONTRIBUTORS "AS IS" AND ANY EXPRESS OR IMPLIED WARRANTIES, INCLUDING, BUT NOT LIMITED TO, THE IMPLIED WARRANTIES OF MERCHANTABILITY AND FITNESS FOR A PARTICULAR PURPOSE ARE DISCLAIMED. IN NO EVENT SHALL THE AMDUUS OR CONTRIBUTORS BE LIABLE FOR ANY DIRECT, INDIRECT, INCIDENTAL, SPECIAL, EXEMPLARY, OR CONSEQUENTIAL DAMAGES (INCLUDING, BUT NOT LIMITED TO, PROCUREMENT OF SUBSTITUTE GOODS OR SERVICES; LOSS OF USE, DATA, OR PROFITS; OR BUSINESS INTERRUPTION) HOWEVER CAUSED AND ON ANY THEORY OF LIABILITY, WHETHER IN CONTRACT, STRICT LIABILITY, OR TORT (INCLUDING NEGLIGENCE OR OTHERWISE) ARISING IN ANY WAY OUT OF THE USE OF THIS SOFTWARE, EVEN IF ADVISED OF THE POSSIBILITY OF SUCH DAMAGE.

Purpose

The application allows the user to create an intranet (internal network)/Extranet (partially available to the outside world)/Internet (accessible by the outside world) portal.

An intranet portal can help a company create productivity in the tens of thousands of dollars. (NN Group – www.nngroup.com) An extranet and internet portal can help your customers and partners be self-sufficient in their interaction with your company and it's resources.

This software provides tools so that an intranet portal can be created and maintained easily within a company.

Such things this portal can handle are:

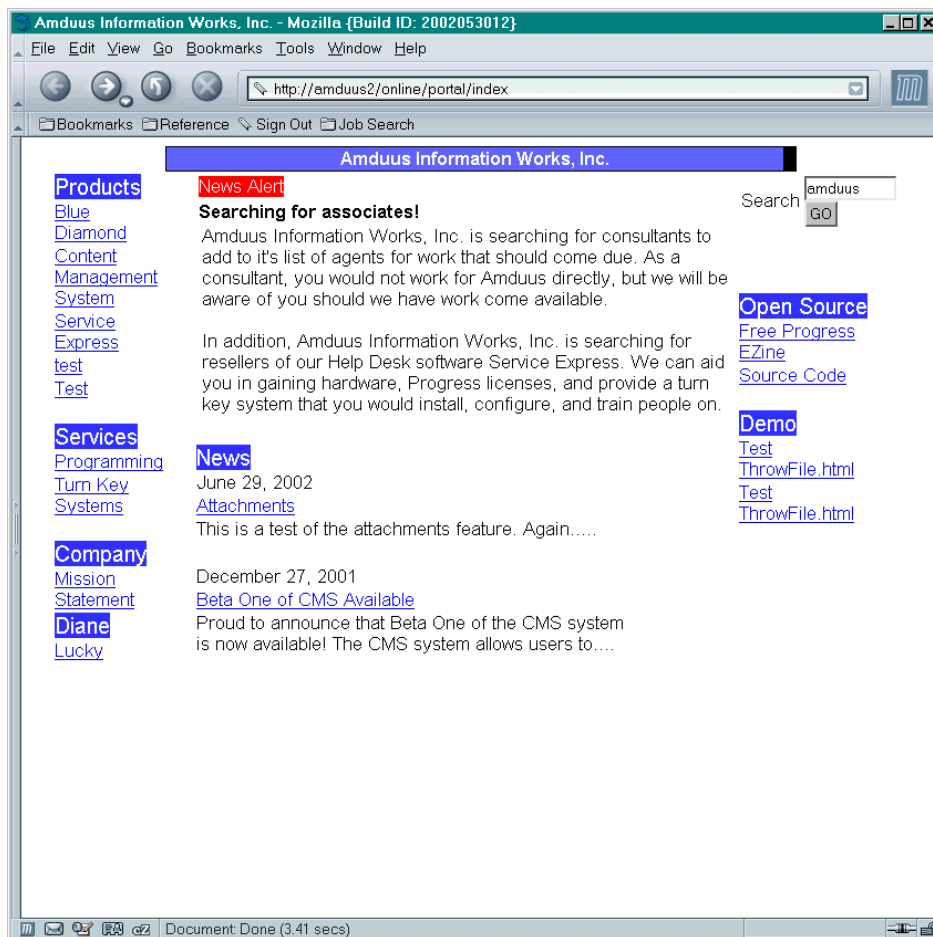
- Company News/Jobs Available/Products/....
- Company Skills Finder
- Company Address Book
- Search
- Collaboration Tools
- Knowledge Base
- ISO Process Documentation

The portal is very flexible. It's main goal is to take articles of information and make them easily available and easily managed by a company.

Articles can be created and placed under different categories. As such, employee information can be placed under a category "Employee Address Book". Instructions for activities (database backups) and processes (creating users, servicing equipment, etc.) can be stored as an online ISO documentation system.

Collaboration tools allow users to create a collaboration "room." Users can then enter that room and create messages that are shared with others within the room. (Think Yahoo Club/Group.) These are good for passing information amongst a group of members that will be stored over time (as opposed to Email which must be subscribed to, etc.)

Search tools are provided to easily find all items within the portal based on keywords and wording found in the articles.

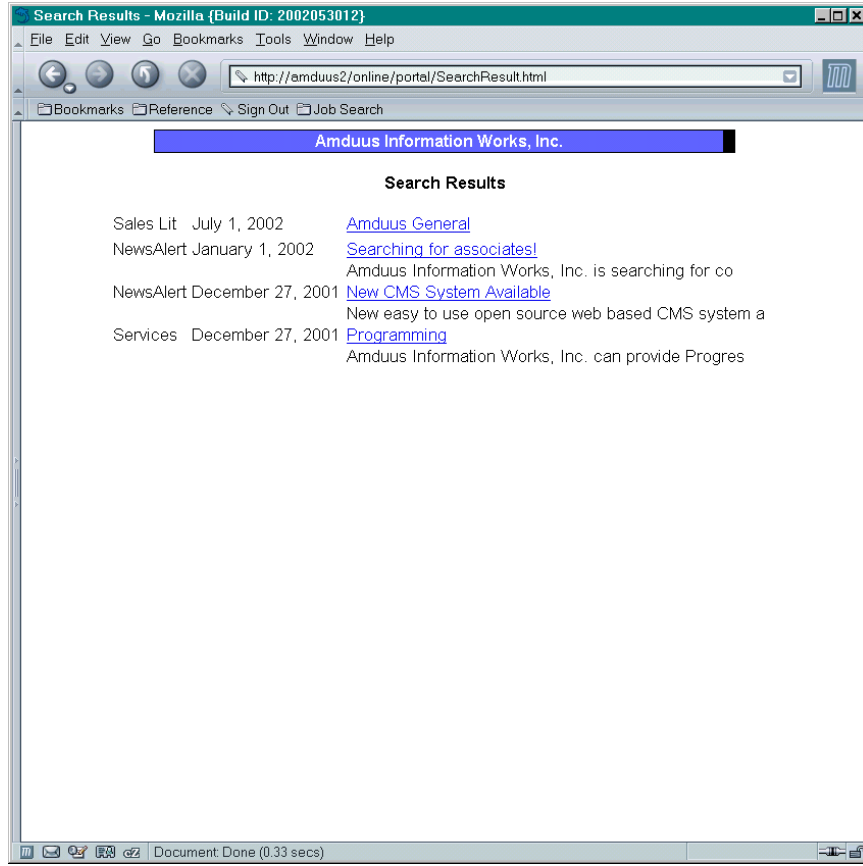
Sample Web Site built with CMS tools:*A Sample Home Page*

This home page is constructed using a simple table of three columns with the components:

ShortList()
 MenuList()
 ShowTitle()
 NewsAlert()
 InputSearch()

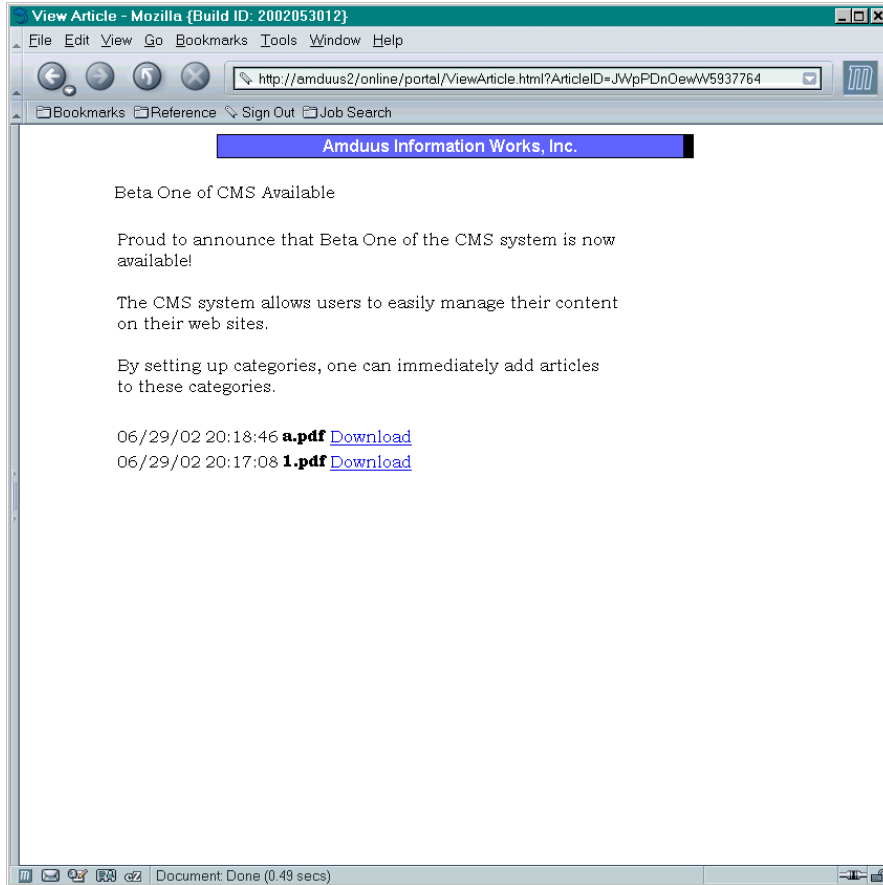
By updating any articles in the categories handled by this page with the administration tool, this page will automatically be updated in the proper manner as well with the proper links. Further behaviors of these components can be looked up later in this manual.

The source code for this example is found under the portal/amduus directory.



Search Results

The articles composing the site can be searched. The search results are displayed with hyperlinks to the article, as well the category found under and a summary of the article's text.



A sample Article

Once an article is selected, it is displayed in the format pre-defined by the site creators. Such items as style sheet for font formatting and layout of data in the page can be achieved with a page template. The data is then pulled from the database and placed into the template.

Note how if there are any data files for specific programs, they can be attached to an article and displayed on the page with download links for ease of distribution.

Requirements

The software is written in the E4GL language that works with Progress Software's middleware tools sets. The two tool sets needed are as follows:

- Progress RDBMS or DataServer available DB
- Progress Webspeed or Amduus Information Works, Inc. Blue Diamond

The following operating systems can be used:

- Red Hat Linux
- HP-UX
- UNIXWare
- Solaris
- AIX
- Tru64
- Partially functionallity on MS Windows

This application uses utilities found with UNIX operating systems. Currently Windows based computers cannot use these features of the application.

Amduus Information Works, Inc. can create turn key systems based on Linux. The hardware would be rack mountable or tower servers. We are resellers of Progress RDBMS and transaction server products. The server would be purchased and the software installed, configured, and tested. This equipment would then be sent to your company. From this, you can create your intranet (or we can for you.)

If you wish to customize the templates for the portal, you will need programmers experienced with Progress E4GL, HTML, and possibly Javascript.

Maintenance and Support

This software is presented as “Open Source.” It uses a BSD license¹.

In short, you can install it on as many machines, to be used by as many people, as you wish.

You are welcome to re-distribute the source and any binaries for it for sale or not for sale. You must include Portions © Amduus Information Works, Inc. and Scott Auge in your documentation. All source code license headers must be intact on both distributed source files and source files derived from the original source files.

It is illegal to remove the header comments from the source files and derivative works of those files.²

Maintenance is defined as defect correction, customization, and feature upgrades. If you wish immediate maintenance, it is available from Amduus Information Works, Inc. by contacting sales@amduus.com. The Amduus web site uses this software if you wish to see it in action.

Support is defined as configuration, installation, and answering questions. Amduus Information Works, Inc. can be contracted to provide this also.

All the source code is available, so if you wish to change the intranet with your own programmers or contract programmers – please feel free to do so. If you make any neat tricks, please send the results to me at sauge@amduus.com.

Donations for the application are welcome!

If you encounter a problem, please let me know!

If you use the tool set, please let me know so we can have articles or comments about it!

Please see the <http://www.amduus.com> web site for an address to send donations.

¹ Underlying Progress license may be more restrictive. This license refers to the application, not the Progress tools license.

² I am not asking for much – just some recognition!

Installation

Step One

Install the Progress RDBMS
or
Oracle RDBMS and Progress Oracle Dataserver

Step Two

Install Progress Webspeed
or
Amduus Blue Diamond

Step Three

Create directory for application

Step Four

Unzip application into newly created directory

Step Five

Configure Webspeed/Blue Diamond and the RDBMS

Your propath should be:

1. Installation Directory/BlueDiamond/prgsrc (if using Blue Diamond)
2. Installation Directory/BlueDiamond/plussrc (if using Blue Diamond)
3. Installation Directory/portal/src
4. Installation Directory/portal/Amduus (if using sample site)
5. Your Application Propath

Step Six

Load amduus.df into the database to create the schema.

Edit the script/portal.conf file to meet your needs.

Load the configurations into the database with LoadParms.ksh.

Step Seven

Begin creating intranet. See programming notes. Amduus Information Works, Inc. has additional documents to show how to create an intranet site, as well we can train you on this.

Setting up the static web page to lead to the portal

If you have no links from your home page at www.yourdomain.*** you will need to create a meta refresh page. This will cause the browser to automatically move to a different page.

```
<html>
<header>
<META HTTP-EQUIV="Refresh"
CONTENT="0;URL=http://www.amduus.com/online/portal0001/index.html">
</header>
</html>
```

Above is some sample code of such a page. Note the elements in red is what you would need to change in order to get to the correct URL.

Your web server may have some configurations to automatically convert an URL from one to another to achieve the same as above.

Administration Tools

The administration tool is used to manipulate the data the templates format. These are the main types of data available for manipulation:

Articles

Articles are the content of the web page. This content is molded and presented according to the template found in ViewArticle.html.

Articles can include HTML encoding themselves. The most commonly used encoding is <I>, , and the <a> tag. Other less common tags can include the and <table> tags if need be.

Unfortunately, currently articles are limited to 32K of text.

Files

Files are data files associated with certain application programs, such as MS Office, Adobe PDF Readers, and Visio. These files can be associated to an article.

Very near future enhancements include a virtual directory system for storage of files.

Outside HyperLinks

Sometimes one will want to include links to other web sites.

Previously, within the system, the only way to do this is by linking to an article that has the link in it.

This can now be administered via the Administration tool and the LinkList() function available in the code to create lists of links under a category.

Static HTML “Chunks”

Often in the template programs, there may be chunks of HTML that should be changed without the need for re-compiling the application. Such things maybe address information in the header/footer of the page, as well image logo sources, etc.

These chunks of HTML can be named and referenced via the DBStatic() function in the template pages.

Categories

Almost all articles and links within the system can be stored under a category for aggregation of common data and navigational aids. *Categories do need to be referenced in the template pages – addition or deletion of categories that appear on web template pages will require some minor programming.*

Restrictions

Articles (and in the near future files) can be restricted to a set of users. This restriction is named and users are assigned to the restriction.

Users X Restrictions

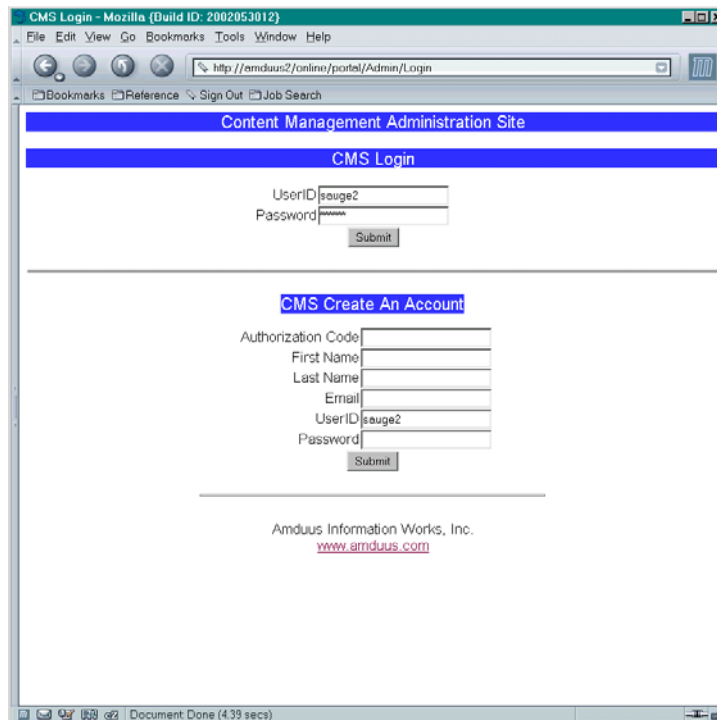
By assigning users to a restriction means only those users will be able to view the restricted article (or file.)

Operating the Administration Tools

Access the administration tool via the URL:

<http://yourmachine/yourvirtldir/yourscrip/Admin/Login.html>

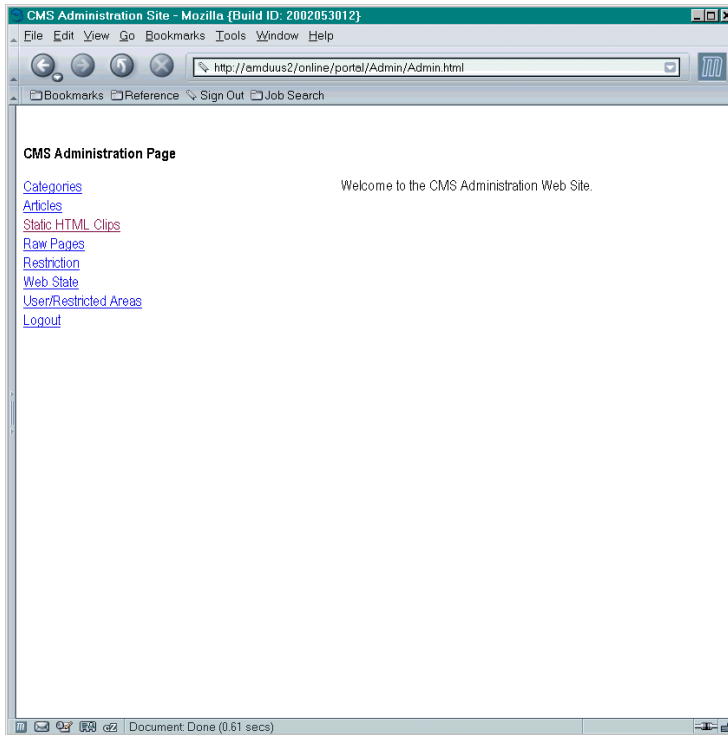
Creating Users and Logging In



Logging in and creating a user

The authorization code is set in the conf file under [Common] DefaultPassword.

Administration Home Page



The administration home page allows the creation and update of data for categories, articles, restrictions, etc.

It includes tools to update bits of HTML that is stored in the database called by the DBStatic() function, as well as the ability to allow the user to create a pure raw HTML page which will override the default template.

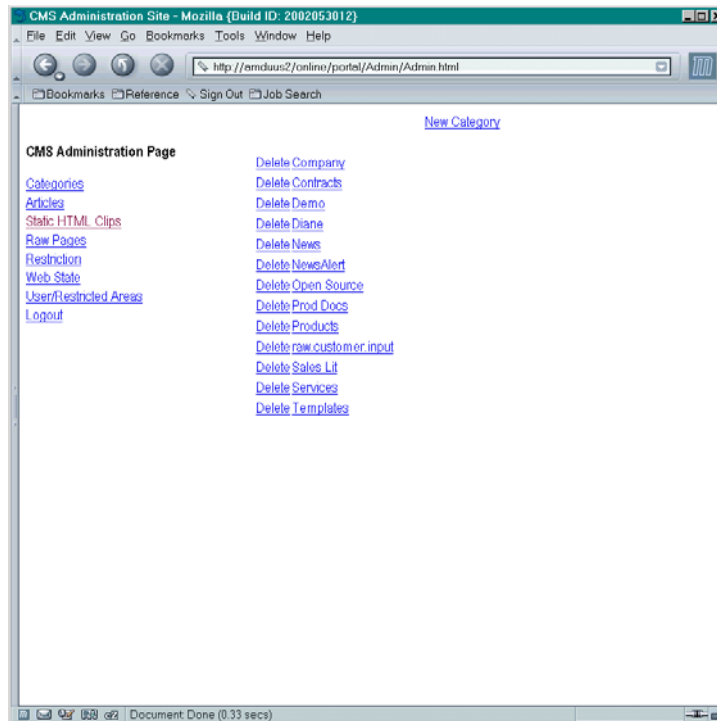
CMS Administration Home Screen

Adminstrating Categories

Categories can appear on the web site via use of the MenuList(), ShortList(), and other functions on the web site template pages.

List of Categories Defined

Categories need not be referenced on the web site to be made and have articles stored under them.

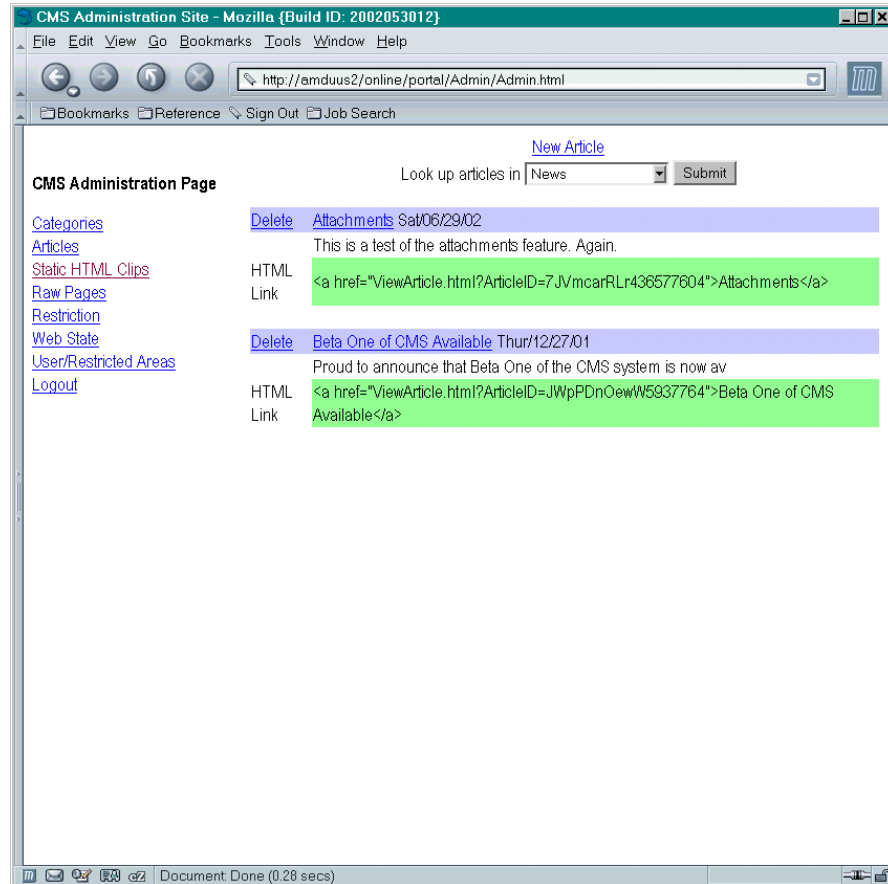


Categories can be renamed and deleted via the tool.

Administrating Articles

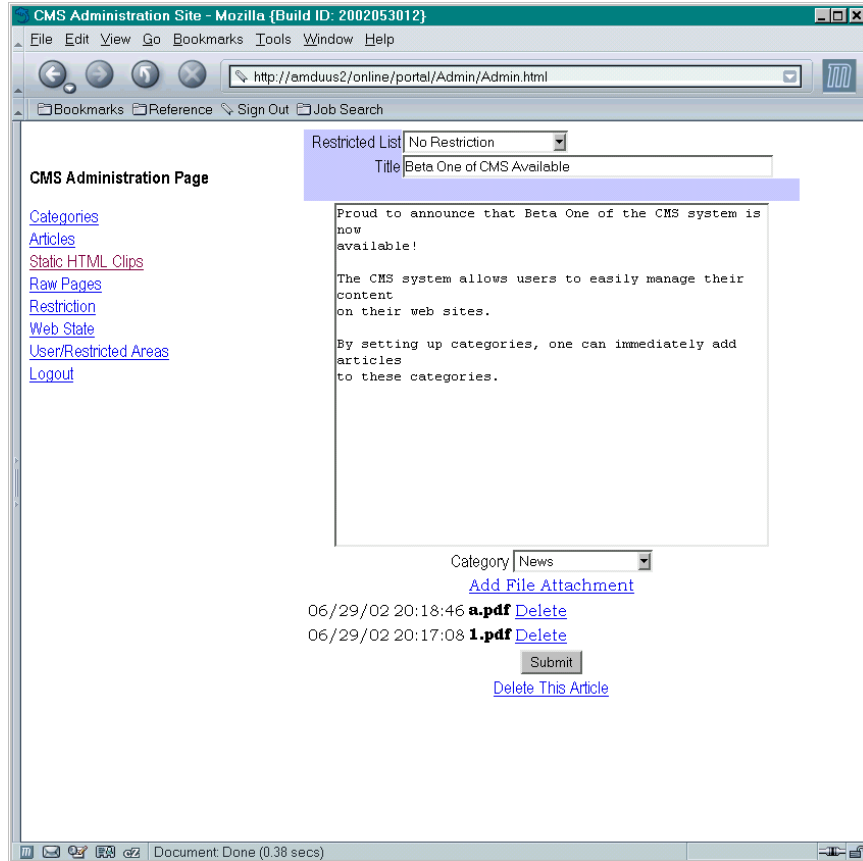
Articles are the substance of the portal. They are the information you wish to have categorized and searchable on the portal.

1. One creates the content of the article, which can have HTML mark ups included, but are not required so an HTML developer is not required to add content.



2. One then determines the category the content should fall under and chooses that from a drop down box available in the article input screen.
3. If there are restrictions as to who can see it, use the restriction drop down to identify the restriction the user must be a part of to read the page.

That's it! Simple administration of content on the web site. Article information will appear where it should, how it should, and be searchable automatically!



Updating an article

Security

The use of the administration screens requires a user ID and login. The following pages are associated with this:

Login.html
Logout.html
EditUser.html
InputCategory.html
EditCategory.html
InputArticle.html
EditArticle.html
ListCategories.html
ListArticles.html
Admin.html

HTML Programs

These programs provide the components and containers that can be used to create the web site. They can be used on the whole, or as a subset of the web site. They can be linked to from static pages of the web site.

Note some of these pages are not yet available – they are identified as such. Emphasis on works that contribute to Amduus and it's customers come first....

index.html

This is the home page of the content management system. Users should be directed to this page for the initial use of the application.

SearchResult.html?SearchString=[]

This program will return all the web pages that contain the words found in SearchString. It is a global search of all the articles in the application.

Contact.html?CategoryID=[]&ArticleID=[]

Users who created a page can be contacted by the people who read the page. This program sets up a screen where an email is sent to the contact person identified with the page.

ViewArticle.html?ArticleID=[]

This page presents the article's complete text.

The Contact.html page is automatically linked into this page with the appropriate information.

InputArticle.html?ArticleID=[]

This page allows the creation or updating of an article. It is built into the Administration Tool.

EditArticle.html?ArticleID=[]&Action=[New,Delete,Modify]&ArtText=[]&ArtTitle=[]&CategoryID=[]

This page allows one to create, delete, or modify an article within the system. It expects Plain Text. User must pass through Login to accomplish this. It is built into the Administration Tool.

Login.html?UserID=[]&Password=[]

Editing of the articles requires a login. This program sets up a cookie to be used with the secure.i routines for access to pages. See Amduus/ViewArticle.html for more information on implementing restrictions on information via those templates.

Logout.html

Allows the user to logout of the application.

EditUser.html?UserID=[]&UserPassword=[]&AdminPassword=[]&Action=[Delete,New,Modify]&UserEmail=[]&FirstName=[]&LastName=[]

Creation of a user on the system. AdminPassword is set in the configuration file. This page is available via the Administration Tool.

ListUser.html

Not yet implemented!

Page lists all the available users within the application. One must be logged in to use this page. Will have links to EditUser.html automatically.

EditLink.html?LinkID=[]&Action=[New,Delete,Modify]&Title=[]&Href=[]&CategoryID=[]&CategoryName=[]

This allows the creation, deletion, or modification of a link within the web site. This is usually used for pages or sites outside the management of this site. This page is available via the Administration Tool.

InputCategory.html?CategoryID=[]

Allows the input of a new or modified category. This page is available by the Administration Tool.

EditCategory.html?CategoryID=[]&CategoryName=[]&NewCategoryName=[]&Action=[New,Delete,Modify]

Used to create modify or delete a category. Note that deleting a category deletes all articles associated with the category. This page is available by the Administration Tool.

EditCollab.html?CollabID=[]&CollabName=[]&Action=[New,Delete,Modify]

Not yet implemented!

Creates a collaboration room.

EditCollabMsg.html?CollabID=[]&MsgID=[]&Action=[New,Delete,Modify]

Not yet implemented!

Editing of a message within a collaboration

ViewCollabMsg.html?MsgID=[]

Not yet implemented!

Displays a collaboration message.

ListCollabMsg.html?CollabID[]

Not yet implemented!

Lists the messages in a collaboration.

Internal Procedures and Functions Available

Some functionality occurs within an application. The following procedures are used to assist the site creator with some tools to ease creation of the pages, should additional programming be required.

By customizing these routines, the overall look and feel (colors, images, layout, font, etc.) can be done in one location and will be effected by all the application. Note that a recompile may be required as this is code within the application.

Many of these functions are .i files derived from .htm files. The .html files are meant to be customized and used with the portal application.

DBStatic(Name)

Function that pulls up a database record named by the input argument and returns that HTML code. Could be used for sections of pages that need to be changed dynamically without recompile, as well as for internal style sheets for each page to be referenced from the database instead of from a static location.

LinkList (Category, NumberToShow)

Function that returns a list of links specified for the category in the administration system. Useful for outside web sites or places not leading to ViewArticle.html.

ShowTitle()

Function that creates a table to show the title of web site.

ShowFooter()

Function that creates a table to show the footer information of a web site.

ShowLinks(CategoryName)

Creates a table of links for the CategoryName. Note the table is titled with the category name followed by the links.

ShortList(CategoryName, NumberListed)

Same as the ShortList.html page, only can be called within a page by the programmer. Returns the results within a table. If ShowSummary is set to YES, it will show the summary of the articles, if NO, then only the links with the Article's Title will appear.

MenuList(CategoryName, NumberListed)

Acts like ShortList(), but will not output the date or a summary of the article.

ShowCategories()

Returns a table with all the categories within them. Each category is linked to ShortList.html for that category.

ShowContact(ArticleID)

Creates a hyperlink to the Contact.html page appropriate for the given page.

InputSearch(SearchString)

Used to create a table with inputs for searching – calls the SearchResults.html page.

GetArticleID()

Returns the ID of the article if available.

ShowArticleInfo()

Returns a table with information about the article (Create Date, User created, etc.)

ShowArticleText(ArticleID)

Returns a table with the article presented in it.

ShowArticleTitle(ArticleID)

Returns a table with the article title in it.

Date2Text(*DATE*)

Returns a string with the date spelled out in it.

NewsAlert(*CategoryName*)

Returns a table with the latest article in it for the given category.

ShowCollabMsgHdr(*MsgID*)

Shows the header of a collaboration message

ShowCollabMsgText(*MsgID*)

Shows the collaboration text (formatted as defined by the function)

ShowCount(*CounterName*)

Returns the count IncCount(CounterName) has been called. Good for counting accesses to particular articles or pages.

IncCount(*CounterName*)

Increments the count for the CounterName.

text2html.p (input text, output html)

Procedure that will take text with CR/LF etc, and return it with <p> tags. No fonting is done.

date2text.p (input date, output text)

Returns a string with the date spelled out in it.

SearchText.p (input SearchString, input TextToSearch, output Score)

Returns an integer score denoting how many words in search string appear in TextToSearch.

CSSLink.i

Obsolete – place the stylesheet in DBStatic() and include in each page template.

Allows the page to be linked into an external CSS style page. To point to a style sheet, put it's URL in {&STYLESHEET}. These are the built in styles:

```
menulistlink  
menulisthdr  
shrtlistlink  
shrtlisthdr
```

Configuration File

The configuration file helps manage the operation and behavior of the application.

```
# Home page and common to pages information
[Common]

# Title of the web site
HomeTitle=

# The application's temporary directory
TempDirectory=

# Default Password for creation of a user
DefaultPassword=

# Collection of configurations associated with articles
[Article]

# Number of articles listed in ShortList.html
NumberListed=

# Number of characters for article summaries in ShortList.html
SummaryChars=100

# The following are used by the mail portion of the application
[Mail]

# Who the mail is from
From=

#Where to find the sendmail command
SendmailCommand=

# Configurations regarding collaborations
[Collab]

# Number of collaboration messages to list
NumberListed=
```

The Configuration file is placed into a database table called Parns. It can be done so with the LoadParns.ksh script.

Scripts

The following scripts are provided to give the administrator easy to use administration tools for the application.

setenv.ksh

This script is used by the other scripts to set commonly used values. Within it can be set:

- The Propath
- The Progress Installation Directory
- The configuration file location
- The database connection parameter's file
- Broker used by Webspeed to handle the application
- Other

Configuration of this script pretty much configures the application as far as the Progress portion is concerned.

```
#!/bin/ksh
# $Header$
# Written by Scott Auge scott_auge@yahoo.com sauge@amduus.com
# Copyright (c) 2001 Amduus Information Works, Inc.
#
# Redistribution and use in source and binary forms, with or without
# modification, are permitted provided that the following conditions
# are met:
# 1. Redistributions of source code must retain the above copyright
# notice, this list of conditions and the following disclaimer.
# 2. Redistributions in binary form must reproduce the above copyright
# notice, this list of conditions and the following disclaimer in the
# documentation and/or other materials provided with the distribution.
# 3. All advertising materials mentioning features or use of this software
# must display the following acknowledgement:
# This product includes software developed by Amduus Information Works
# Inc. and its contributors.
# 4. Neither the name of Amduus nor the names of its contributors
# may be used to endorse or promote products derived from this software
# without specific prior written permission.
#
# THIS SOFTWARE IS PROVIDED BY AMDUUS AND CONTRIBUTORS ``AS IS'' AND
# ANY EXPRESS OR IMPLIED WARRANTIES, INCLUDING, BUT NOT LIMITED TO, THE
# IMPLIED WARRANTIES OF MERCHANTABILITY AND FITNESS FOR A PARTICULAR PURPOSE
# ARE DISCLAIMED. IN NO EVENT SHALL THE AMDUUS OR CONTRIBUTORS BE LIABLE
# FOR ANY DIRECT, INDIRECT, INCIDENTAL, SPECIAL, EXEMPLARY, OR CONSEQUENTIAL
```

```
# DAMAGES (INCLUDING, BUT NOT LIMITED TO, PROCUREMENT OF SUBSTITUTE GOODS  
# OR SERVICES; LOSS OF USE, DATA, OR PROFITS; OR BUSINESS INTERRUPTION)  
# HOWEVER CAUSED AND ON ANY THEORY OF LIABILITY, WHETHER IN CONTRACT, STRICT  
# LIABILITY, OR TORT (INCLUDING NEGLIGENCE OR OTHERWISE) ARISING IN ANY WAY  
# OUT OF THE USE OF THIS SOFTWARE, EVEN IF ADVISED OF THE POSSIBILITY OF  
# SUCH DAMAGE.
```

```
export DLC=/usr/dlc  
export PFFILE=/db/amduus/parm/amduus.pf  
export CONFFILE=/appl/opensrc/portal/script/portal.conf  
export BROKER=opensrc
```

The following are associated with the Webspeed Transaction Broker. If you are using Blue Diamond, these scripts should be ignored. Be sure to set up the ubroker.properties file before using these scripts.

startweb.ksh

This script will start the web broker. It does not effect the administration server, so if this program is not running, it will need to be started before use of this script.

stopweb.ksh

This script will stop the web broker. It does not effect the administration server, so if this program is not running, it will need to be started before use of this script.

restartweb.ksh

This script will stop and start the web broker. It does not effect the administration server, so if this program is not running, it will need to be started before use of this script.

watchweb.ksh

This script will provide information about the broker. It does not effect the administration server, so if this program is not running, it will need to be started before use of this script.

logindb.ksh

This script logs into the DB using a character client.

startdb.ksh

This script will start the db associated with the application.

stopdb.ksh

This script will stop the db associated with the application.

LoadCategory.ksh

This script will load the categories from the configuration file. It will not modify existing categories. It will not delete removed categories.

UNIX OS Dependencies

The scripts associated with the application depend on the Korn Shell or shells like it.

The mail portion of the application depends on sendmail.

If Blue Diamond is used, it is completely dependent on the UNIX CGI implementation and Korn shell scripting.

Programming Notes

It is recommended that another directory be set up that is meant for your portals pages that are made outside of the CMS directory. Then set up your propath to see that directory as one would see the CMS code.

One should put your customized code in front of the CMS base installation.

One should copy the following html files from the CMS installation into your customized CMS application directory.

ViewArticle.html
SearchResult.html
ShortList.html

The following include HTML files usually require customizations:

ShowTitle.htm
ShowFooter.htm

Create some HTML files that will house the tools and components available within the application (See amduus/index.html for a sample home page that uses these tools.)

Amduus DB Tables Used

WebState
Parm
AccessCount
Person
Contact
SecUser
Article
Category